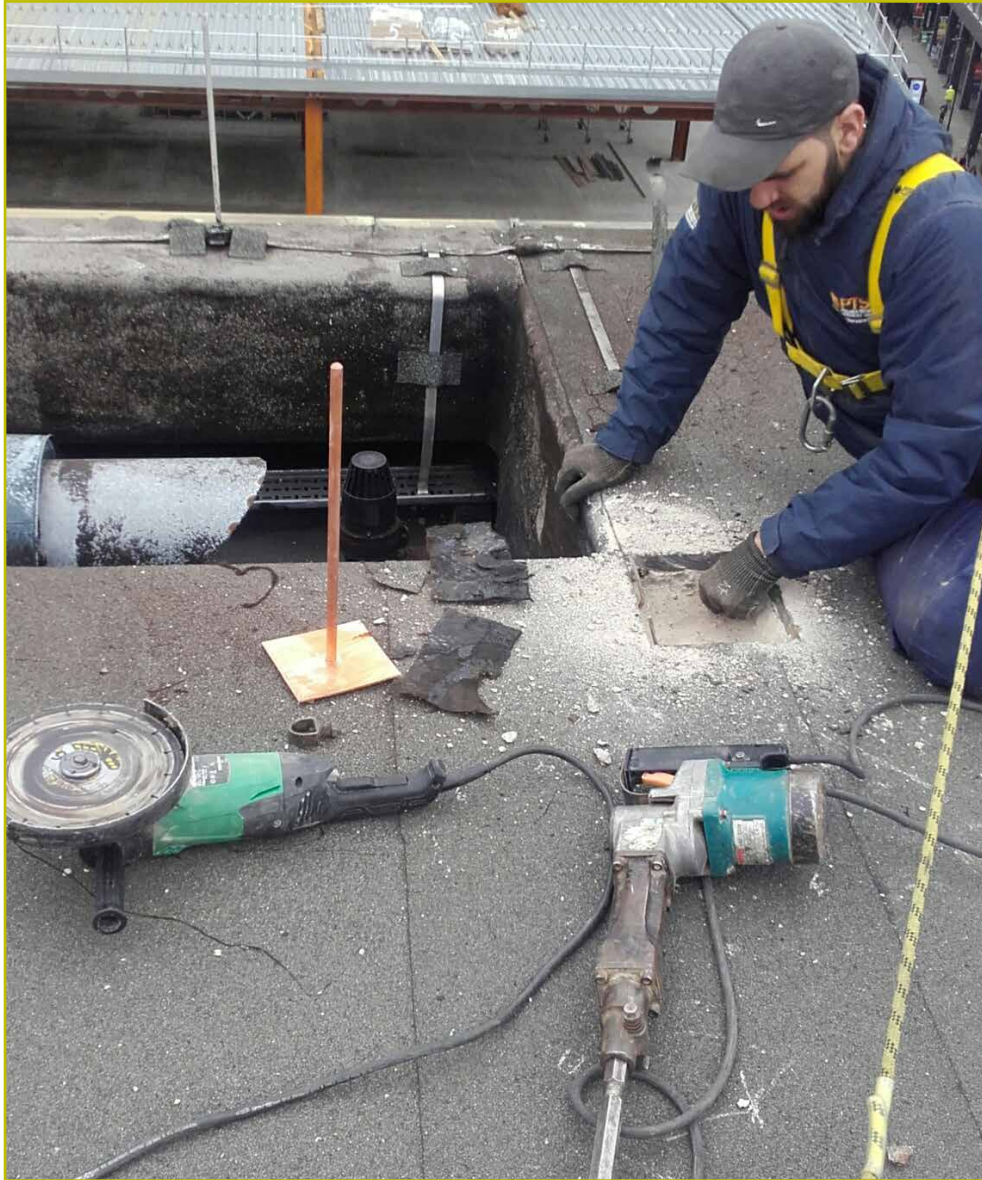


PTSG aims high at County Hall Apartments



PTSG aims high at County Hall Apartments



County Hall Apartments is a development of 605 luxury flats, located in Lambeth, next to the London Eye. The apartments have historical significance to the city, as they served as the headquarters of the local government for 64 years. They are faced in Portland stone in 'Edwardian Baroque' style, a popular architectural style of many public buildings built in the British Empire during the Edwardian Era.

PTSG's Electrical Services division was selected to carry out some major lightning protection repairs to the apartment building's roof.

Following exposure to harsh weather conditions, combined with various roofing and asphaltting projects on the site's roof, the majority of the lightning protection earth connection points had become damaged and were no longer working satisfactorily.

PTSG's lightning protection engineers worked alongside an appointed roofer, who opened up the roof safely to expose the puddle flange connections to the building's internal steel structure. The connections were then removed and replaced carefully and safely.

Once the replacement connections were fitted the roofer sealed the exposed sections of roof back up and weatherproofed the structure, taking care to restore it to its original design and not affecting the aesthetics of the prestigious apartments.

The team had to be conscious of adhering to the client's strict safe system of work methods. With concrete being broken out on the roof, it was essential that the work did not pose any risk to pedestrians beneath the apartment on the ground.

Another safety consideration was the lack of edge protection on the roof, meaning the engineers had to take additional precautions for fall protection, ensuring they were attached to the building at all times by a full body harness and restraint lines.

Once replaced, PTSG's team carried out extensive continuity testing to ensure that the new puddle flange connections will withstand the power of any potential strikes in the future. Extensive checks and tests were performed which ensured the integrity of the new connections will be maintained for a number of years, to avoid more replacements in the near future.

The project took place and was completed and handed over in a full working week, to the satisfaction and positive feedback of County Hall Apartment's property management team.